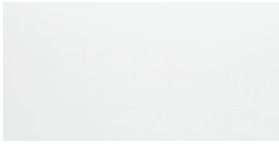


finiture

finishing

scocca

carcases



bianco-bianco



bianco - antracite

ante, frontali e fianchi personalizzati

doors, fronts and customized sides

rovere nodato naturale

rovere nodato naturale

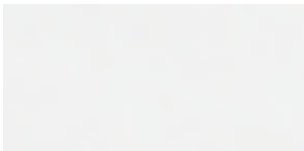


rovere nodato



laccato bianco opaco

white matt lacquered



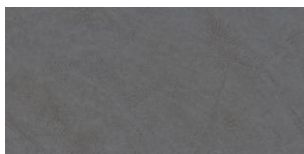
bianco opaco

resina old metal

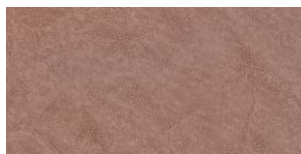
old metal resin



old metal bronzo



old metal zinco



old metal copper

sistema maniglie

handle system

disegno/ drawing



SLIM

finitura cromo
chrome finishing



PLUS

finitura inox satinato
satin stainless steel finishing



OMNIA

finitura cromo
chrome finishing



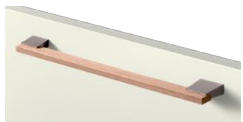
GLASS

finitura cromo / inserto vetro
chrome finishing / glass insert



FETRO'

finitura brunito
burnished finishing



ESSENZA

finitura inox satinato / inserto legno
satin stainless steel / wood insert